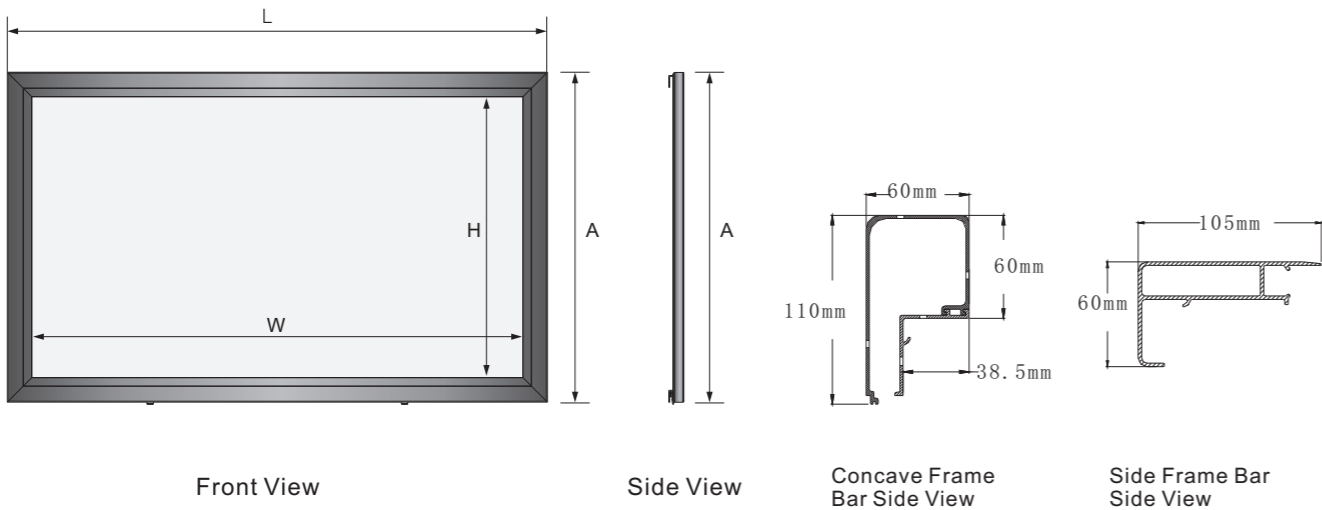


Product Specification

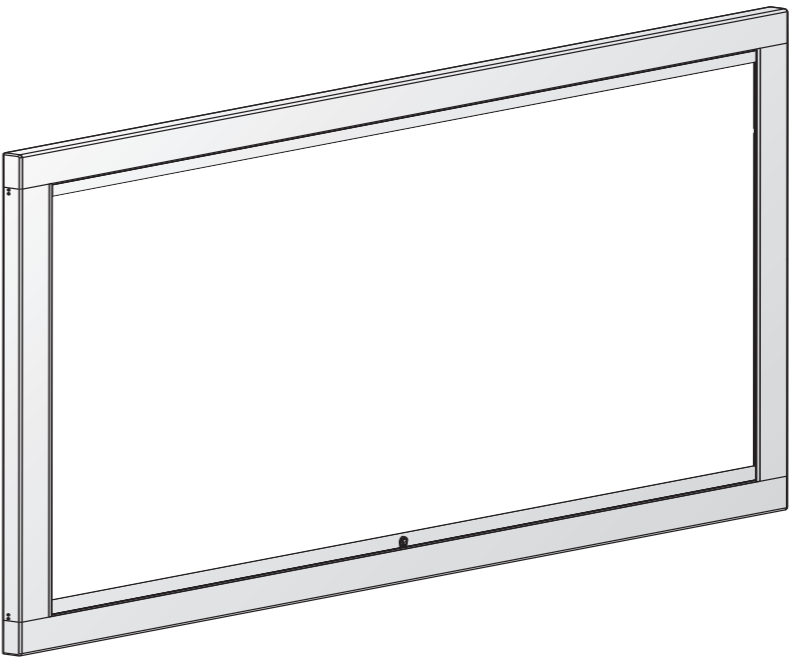
Format	Model	Specification (inch)	Viewing Area		Screen Size		Net/Gross Weight(kg)
			W (mm)	H (mm)	L (mm)	A (mm)	
16:9	LF-VMF-77	77"	1705	958	1915	1258	
	LF-VMF-80	80"	1771	996	1981	1296	
	LF-VMF-92	92"	2037	1145	2247	1445	
	LF-VMF-100	100"	2214	1245	2424	1545	
	LF-VMF-106	106"	2346	1320	2556	1620	
	LF-VMF-120	120"	2656	1494	2866	1794	

Note:
1. Due to product updates, sizes and specifications are subject to change at any time. The tolerance for L is approximately ± 5mm (3/16 inches).
2. Actual dimension is measured by: total screen length x end cap depth x end cap height.



GRANDVIEW®
REPRODUCING GENUINE COLORS

Instruction Manual for
Large-Flat Series Adjustable Fixed-Frame Screen



Questions & Answers

Fabrics of Grandview screen can be used for years, most problems are caused by simple incidents. If problem occurs, please find the list below for some common solutions. If problems keep on, please contact authorized agent of Grandview or call service number at: (8620)34806166

Wrinkle on the frame

- When using normally, the wrinkle can be removed naturally. The removing period will change with 1-15days according to the temperature. Watering can remove the wrinkle faster.

Three years warranty

Grandview provides three years warranty. Contents of warranty include replacement of spare parts while problems occur with correct operation. Not include inappropriately operating the screen or uninstall the screen by yourself. You should reserve in advance for the repair with Grandview or appointed service center.

Model: LF-VMF-xxx

Thank you for purchasing a Grandview projection screen.
Before use, please read instructions carefully. After installation, store instructions for future reference.

Caution

Warnings: please prevent screen from wet place to avoid electric or fire danger

1. Please read carefully with this instructions before installation to avoid the damage caused by inappropriate installation or operation
2. Please keep the screen away from hot sources, such as radiator, heating machine, fireplace, loudspeaker or other relative device.
3. Please handle the repair work to the professional agent
4. Please prevent screen from water as well as putting stuff with water (such as vase) on the screen.
5. Please make sure which one is front or back of product.
6. Please put down the screen carefully because of the aluminum alloy frame.
7. Please cover the screen by cloth if it is not being used for a long time.
8. Please do not poke screen fabric with hand or edge tools to avoid marking on the screen surface.



Please follow the instruction to operate.
Please contact the professional people for repairing.

Cleaning

Clean the casing of screen with a soft cloth and lukewarm water.
Do not use any detergent or cleaning products.

Please follow the installation as below:

- a. Wood wall installation: fix the top and low bracket on the wall using the $\phi 5 \times 60 \text{mm}$ wood screw (3 screws on each bracket) (figure 11).
- b. Concrete wall installation: drill six proper holes on the concrete wall with electric drill, then fix the top and low bracket on the wall using the $\phi 5 \times 40 \text{mm}$ tapping screw and then fasten with the anchor (3 screws on each bracket) (figure 12).

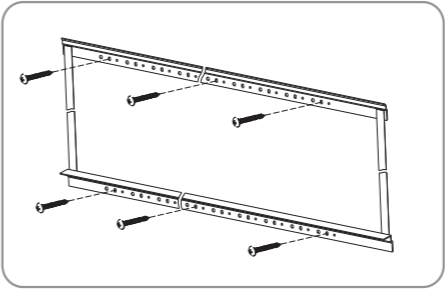


figure 11

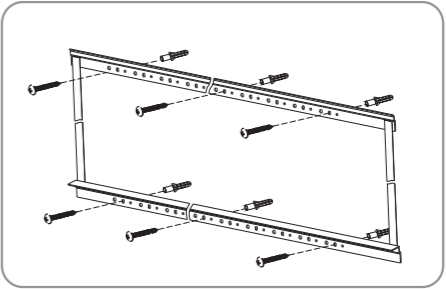


figure 12

3. Buckle the hanger of concave frame bar on top and low bracket, figure 13-14.

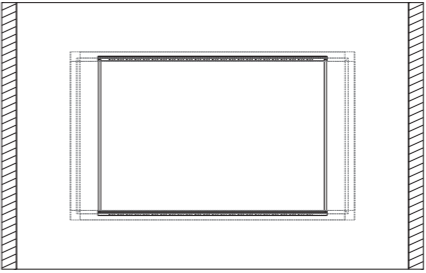


figure 13

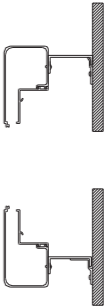


figure 14

4. After hanging on the bracket, please adjust the screen horizontally and ensure the hole of hanging piece and the holes of low bracket is at the same level, and then fasten the security fixing screws into the holes (figure 15-16)

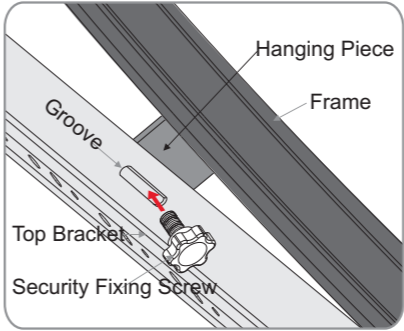


figure 15

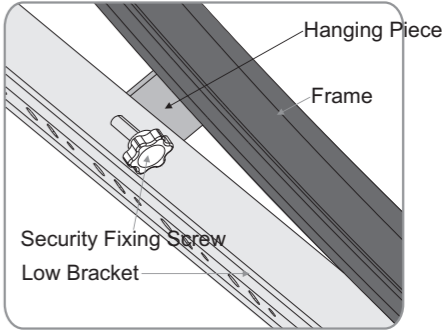


figure 16

Screen Installation

1.Each screen has a set of bracket. Each bracket has a number of corresponding holes and 3 holes per group, Please refer to figure 8.

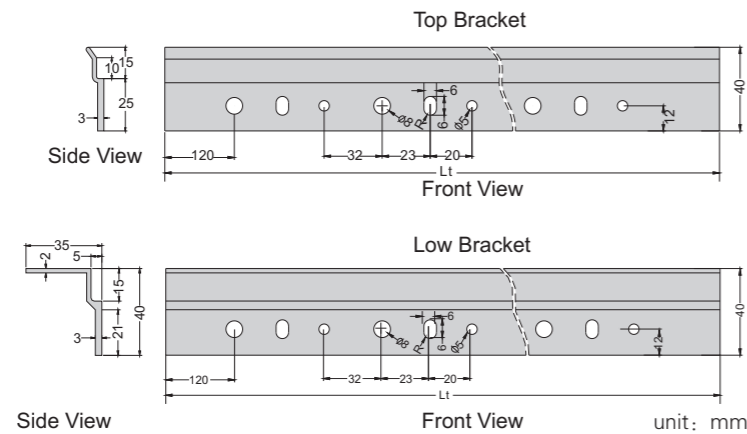


figure 8

Table 2: the length of bracket (Lt)

Format	Specification	77"	80"	92"	100"	106"	112"	120"	150"
16:9	Lt (mm)	1000	1000	1150	1150	1300	1300	1450	1750

Note: due to product updates, sizes and specifications are subject to change at any time.

2.Top bracket and low bracket are connected by a belt when delivery. The top bracket shall keep balance with the low bracket vertically because of the universal gravitation. Please ensure the distance between the top bracket and the low bracket is the same as the data of table shows us (if not, please measure), and then fix the frames on the wall (please refer the data to make sure the distance between top and low bracket) (figure 9-10)

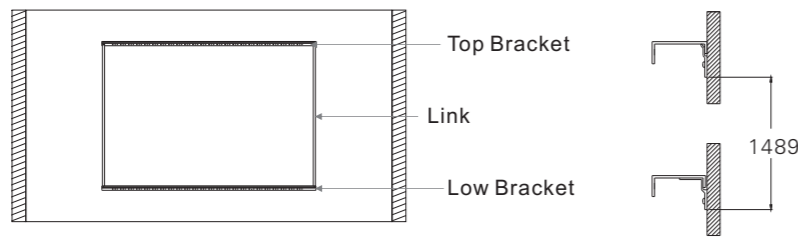


Table 3: the safety distance between two brackets

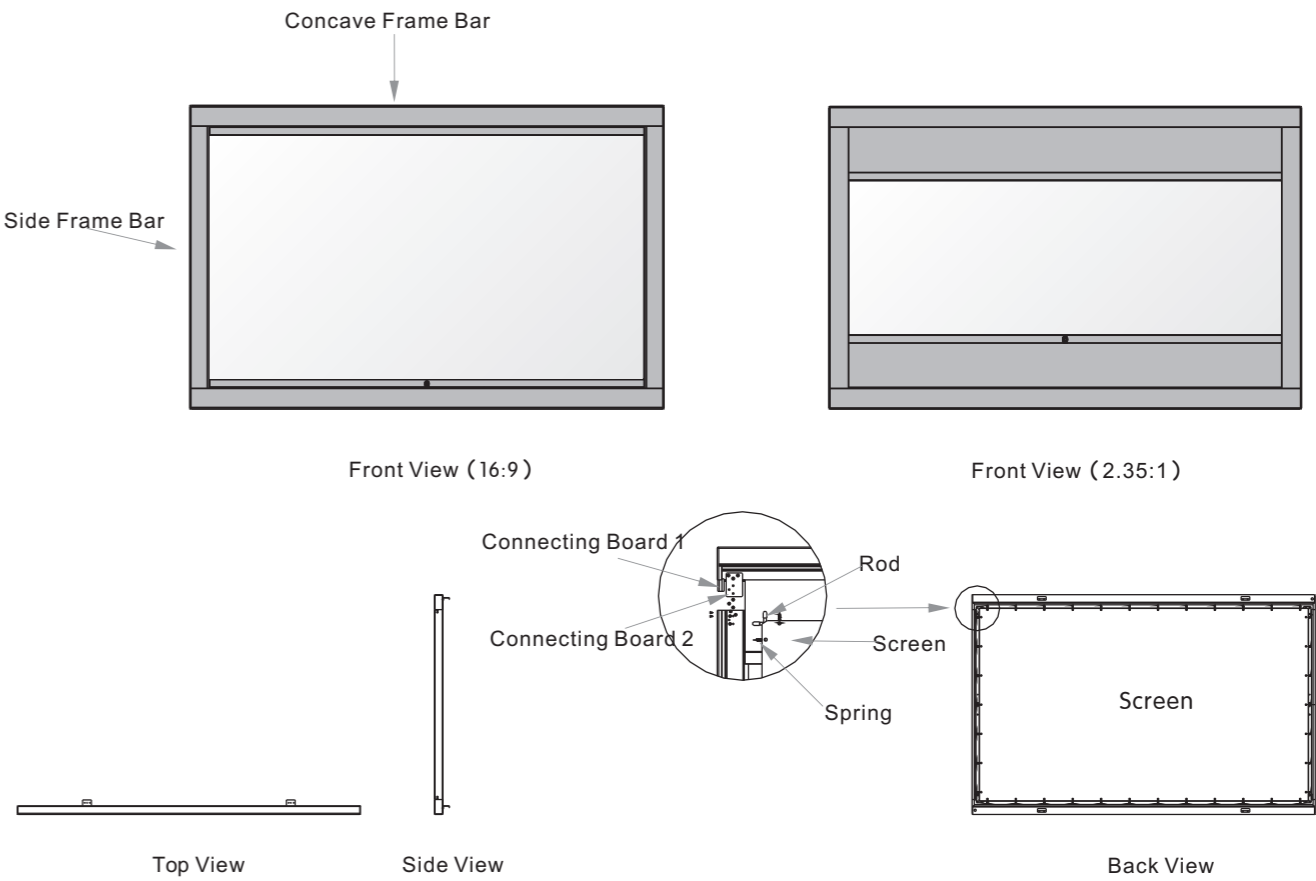
Format	Specification	77"	80"	92"	100"	106"	112"	120"	150"
16:9	Distance(mm)	1063	1101	1250	1350	1424	1499	1599	1972

Note: due to product updates, sizes and specifications are subject to change at any time.

figure 9

figure 10

Description



Accessories

- Concave Frame Bar (2pcs)
- Top& Low Bracket (1pc)
- Security Fixing Screw (2pcs)
- Side Frame Bar (2pcs)
- $\phi 5 \times 40\text{mm}$ Tapping with Anchor (8sets)
- M5X8mmScrew (12pcs)
- M4X6mm Screw(8pcs)
- $\phi 7 \times \phi 0.8 \times 28\text{mm}$ Spring (A number)
- M2.5X8mmTapping Screw (4pcs)
- Instruction Manual (1pc)
- Warranty Card (1pc)

Installation

Open the packing box, check whether the components which need to be installed are complete or not according to the Accessory Diagrammatic Sketch in the user manual, then take out all the small components carefully from the packing box and put them at a suitable place, finally install it according to the operating method as below:

Frame Installation

1.Put the fixing lug into the slots of top and bottom bars, taking the following table as reference (figure 1).

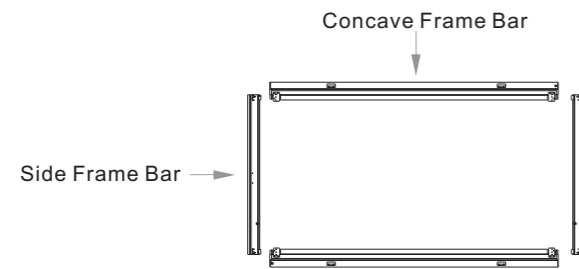


figure 1

1.Pull up the top bar to a suitable distance in order to attach the bar plug into it. And then insert the connecting board 1 and the connecting board 2 into Side Frame Bar (please operate together in two sides). Finally, fasten the corresponding screws: figure 2

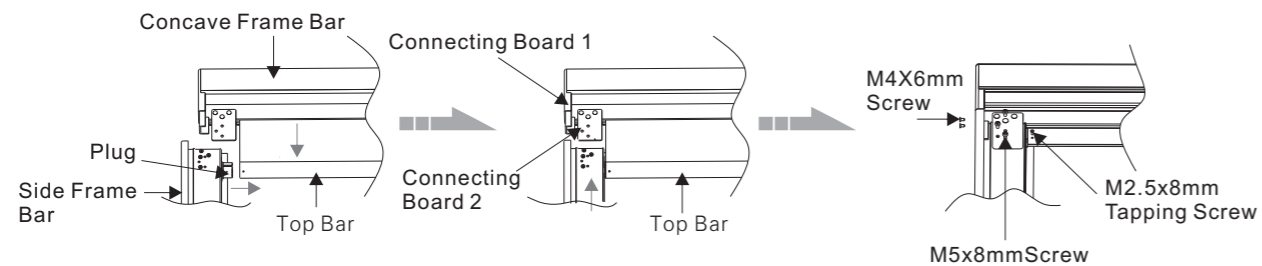


figure 2

3.The installation of low bar is the same as top bar. Notice: please pull up the top bar to a suitable distance and keep it when operating this step, otherwise, the low bar can not be pulled out, and then the installation is completed (figure 3).

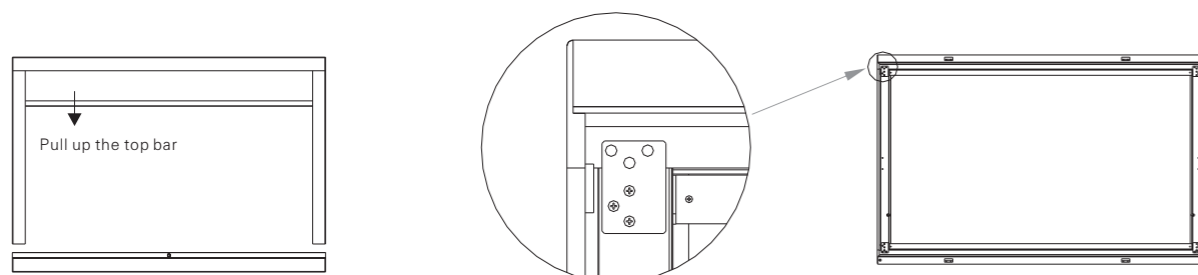


figure 3

Screen Fabric Installation

1.Put the whole frame upside down and then unwrap the screen fabric (avoid scraping the fabric when unwrapping) (figure 4).

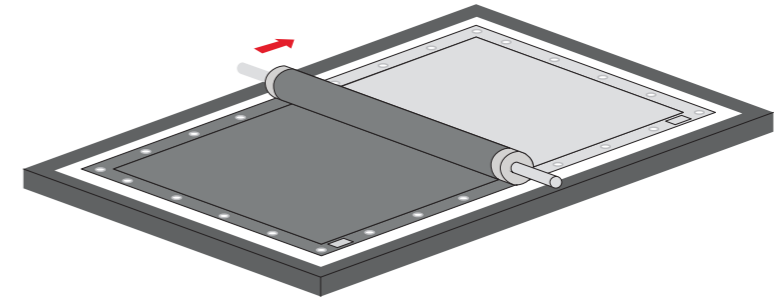


figure 4

2.Put the tension bars to the four slots of screen fabric (note: this is a step suggested to be completed by two persons, one to hold the screen fabric and the other pull through the tension bar) (figure 5-7).

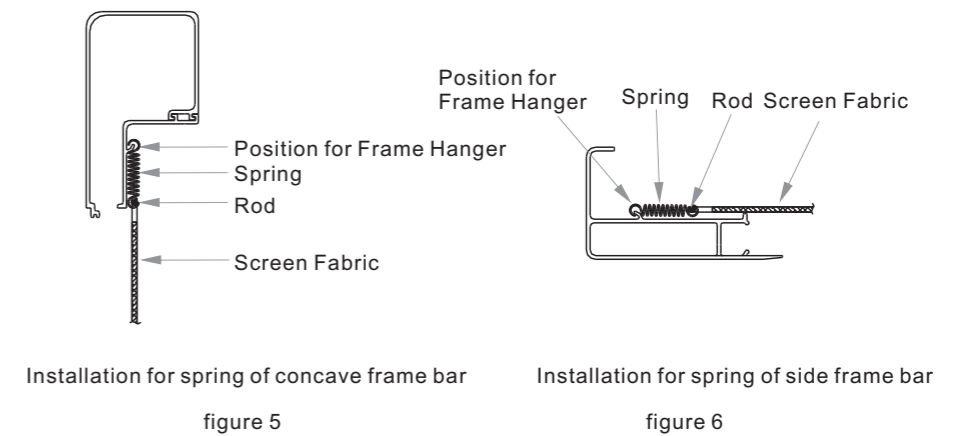


figure 5

figure 6

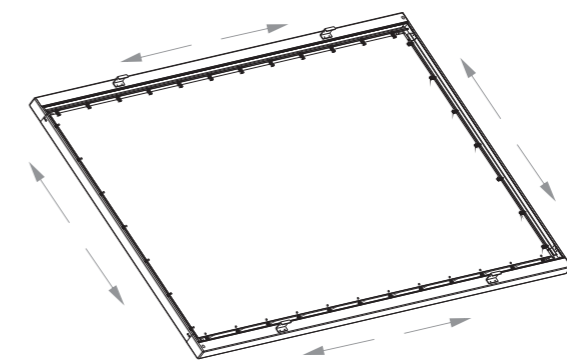


figure7